

# SRI in Iraq

Photoset #3 by Dr. Khidhir Hameed, Al-Mishkhab Rice Research Station near Najaf



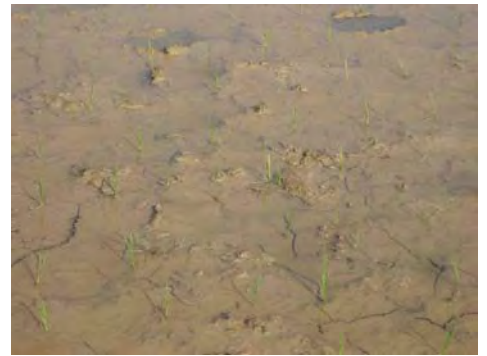
Selection of best seeds using salty water



Combine harvester being used



Comparison between 30 vs. 15 day old seedlings



SRI irrigation method



Nursery seedling boxes



Transplanting machine



Mechanical transplanting field